



1 cuckoo flower



2 Daisy



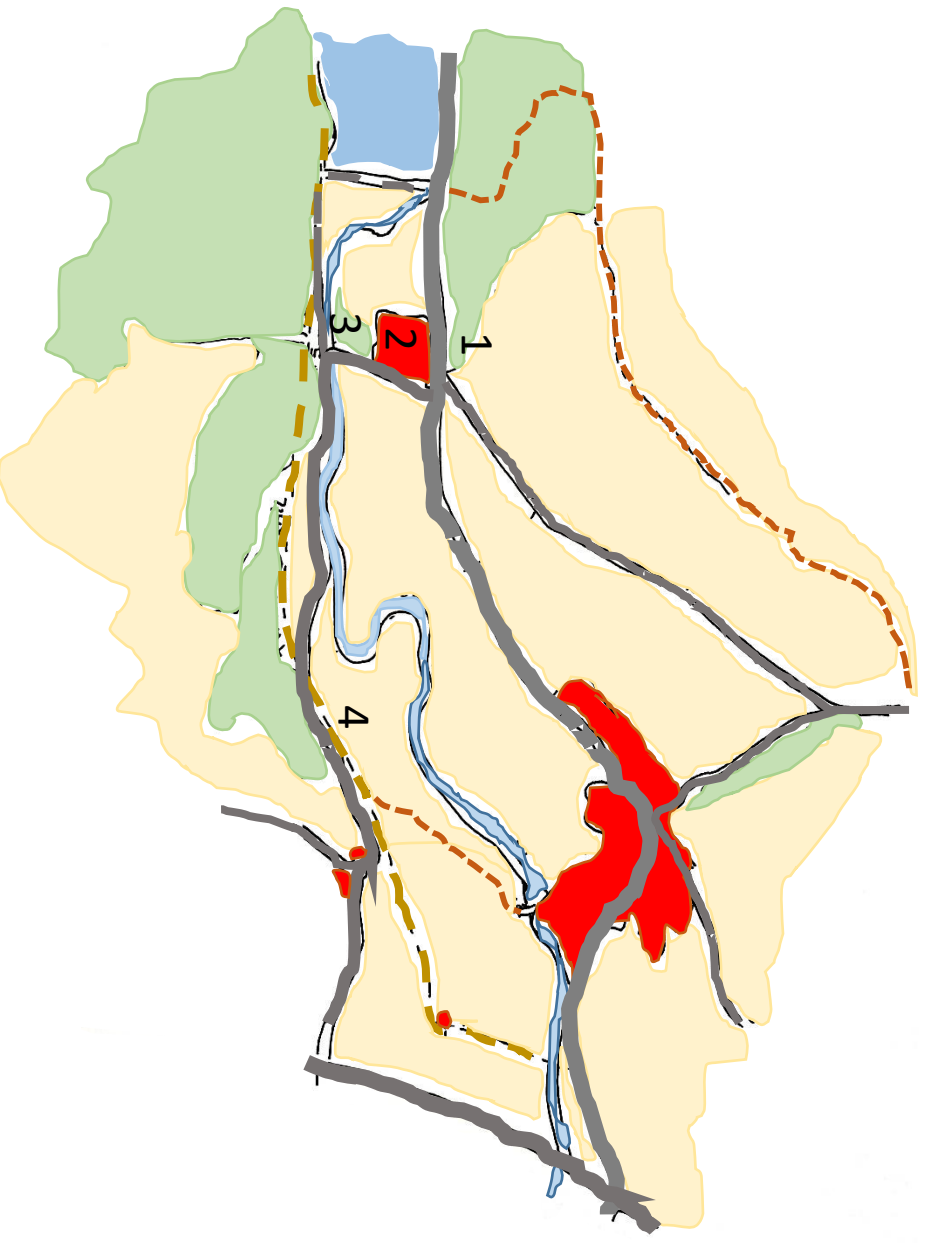
3 German Speedwell



4 Red Campion

1. Cuckoo Flower –so called because its flowering coincides with the arrival of the Cuckoo. Part of the brassica family and loved by Orange Tip Butterflies. Also known as Lady's Smock, Mayflower or Milkmaid. It is the county flower of Cheshire, sacred to fairies and therefore considered to be unlucky if brought indoors. These ones are growing in my garden on Bemrose Gate. *Mir Jansen*

2. Daisy – found in abundance in short grassy areas. The flowerhead is composed of about 250 flowers – the central yellow tubular disk florets and outer white flat ray florets that close up at night and in wet weather. These were found on the green between Steward and Parsons Gate. *Mir Jansen*



3. Germander Speedwell – flowers in May and June known as Cat's Eye or Bird's eye, Eye of the child Jesus, Farewell, Goodbye. In the 18th Century they also became known for curing gout and dried leaves were used for tea. This one was found on the bottom field at Yorkshire Bridge. *Thanks to Penny Lavery*

4. Red Campion – found in moist and shady places. Male and female flowers look similar but are born on separate plants. It is a particular delicacy for the Brimstone Butterfly, the Green-veined White Butterfly, the Orange-tip Butterfly and the Small White Butterfly *Thanks to Ann Kelly*