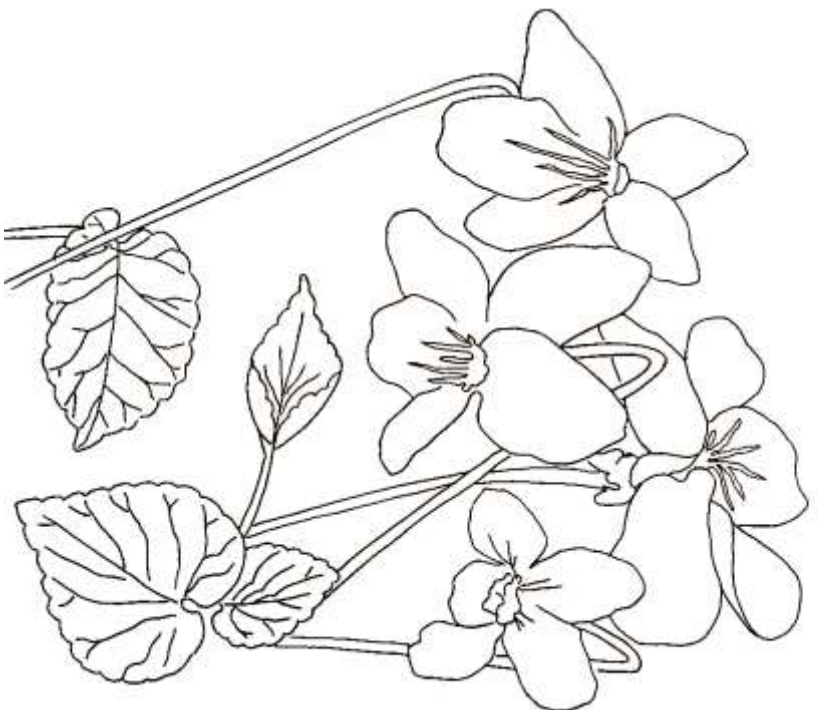
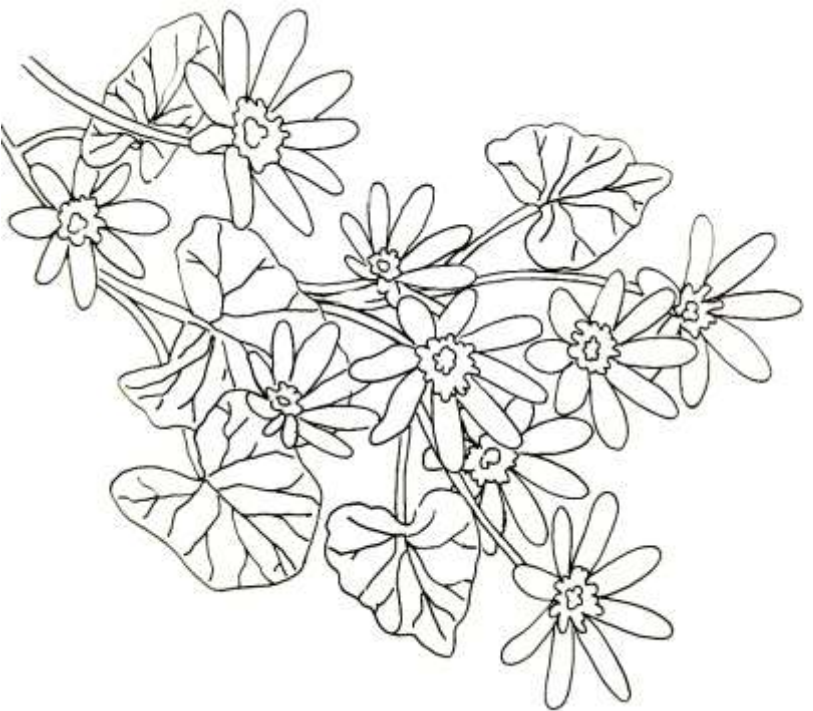


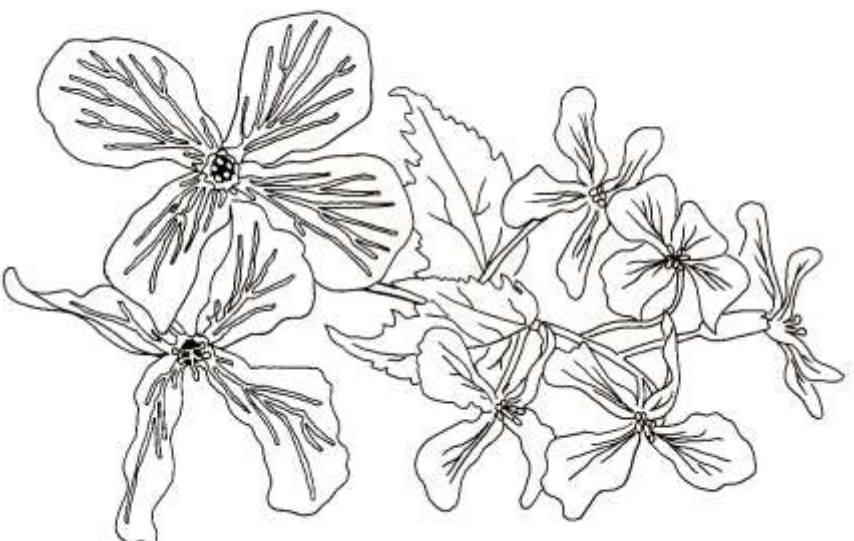
1 Bugle



2 Dog Violets



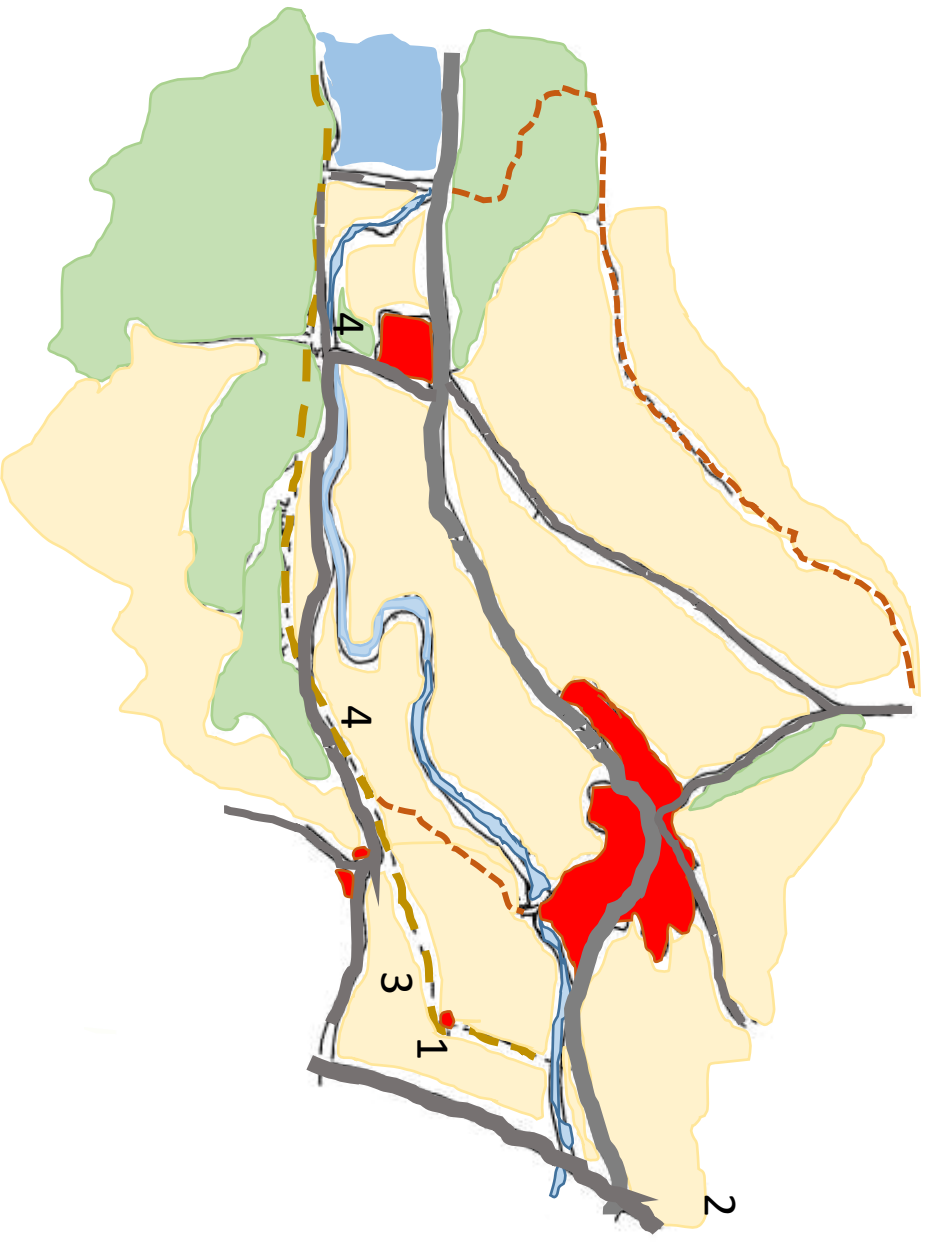
3 Celandine



4 Honesty

1. Bugle – is part of the mint family, a perennial with creeping rootstock from which square flowering stems grow upward. The small, two-lipped flowers open up gradually and are a gorgeous blue. These were found at the bottom of the Thornhill Trail at the Quaker House in Bamford. *Thanks to Ann Kelly*

2. Common dog violets – found in abundance around Bamford and enjoys lots of different habitats. It is dark purple with heart-shaped leaves. The common dog violet has no scent, unlike the sweet violet. This one was found near the golf course. *Thanks to Pete Mackey*



3. Lesser Celandine - the buttercup of damp places. With happy bright yellow flowers that open up in the sunshine, it appears as early as February and lasts well into May. This one was found on the path between the Quaker House and Thornhill. *Thanks to Janet Skirrow*

4. Honesty – a robust and beautiful deep pink or purple flowering plant that thrives in waste ground. Its Latin name, Lunaria, means moon like and refers to the shape of the flat oval seedpods that appear after flowering. Thornhill trail and near Yorkshire Bridge on New Road. *Thanks to Ann Kelly*